



Deluxe Face Shield

- Impact-resistant polycarbonate shield for long lasting protection
- Aspherical lens design provides larger area to protect your face
- Push and turn ratchet-sizing adjustment
- Tension dials increase and decrease tension of shield placement
- Large spark deflection
- Closer curved fit for comfort and greater range of motion

Meets **ANSI Z87.1-2015**

Item No.	Description	Color
5145	Face shield	Clear
5147	Face shield	Green*
5155	Replacement shield	Clear
5157	Replacement shield	Green*

* Not for welding



Standard Face Shield

- Impact-resistant polycarbonate shield for long lasting protection
- Curved design protects a larger area of your face without distortion
- Push and turn ratchet-sizing adjustment
- Easy dial adjustment for individual visor positioning
- Suitable for general grinding applications
- Large spark deflection

Meets **ANSI Z87.1-2015**

Item No.	Description	Color
5140	Face shield	Clear
5142	Face shield	Green*
5150	Replacement shield	Clear
5152	Replacement shield	Green*

* Not for welding



Item No. **5145-20**

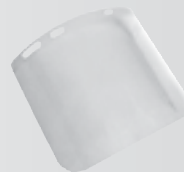
Hard Hat Accessories



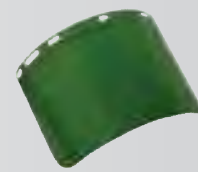
7160-73



Aluminum Bracket



Clear face shield



Green face shield*



Steel mesh face shield

Earmuff/face shield combo

- Attachable earmuffs
- 3 attachable face shields: clear lens, green lens and steel mesh
- Replaceable interchangeable suspensions

Combination Item No.	Description
7160-73	Earmuff/steel wire mesh face shield combo with attachment hardware

Earmuff Item No.	Description
7160-70	Earmuffs (NRR 22) with attachment hardware

Face Shields Item No.	Description
5150	Clear lens shield
5152	Green lens shield*
7160-83	Steel wire mesh face shield with attachment hardware

Aluminum Bracket Item No.	Description
7160-91	Universal hard hat bracket for face shields

*Meets **ANSI Z87.1-2015**

Hard hat accessories available for:

SAS 7160-01 thru 05
SAS 7160-45 thru 52